



**LAS TORRES**  
Patagonia

**SAFETY  
PROMISE**

Our Commitment  
to Cleanliness  
and Wellbeing

**NEW  
PROGRAM**

*Bubble  
Travel*



**BUBBLE TRAVEL**

# **BUBBLE TRAVEL - W CIRCUIT SELF DRIVE 4 DAYS - 3 NIGHTS**

Program for International Tourists 2020-2021



**LAS TORRES**  
Patagonia

Pictures are for reference only



## Trekking and your own Transport - the perfect combination

With the new W Circuit Self Drive program, you can drive to most trailheads of the trekking circuit in the privacy of your rented car. Enjoy trekking in Torres del Paine with maximum privacy and autonomy.



## BUBBLE TRAVEL - W Circuit Self Drive - 4 Days / 3 Nights

### ITINERARY

#### Day 1:

- Collect rental car from agency in Puerto Natales
- Drive from Puerto Natales to Reserva Cerro Paine in Torres del Paine National Park
- Trekking to Las Torres Base Viewpoint
- Accommodation in Central Camping

#### Day 2:

- Trekking to Cuernos sector and back
- Accommodation in Central Camping

#### Day 3:

- Drive from Central sector to Pudeto
- Take catamaran to Paine Grande sector
- Trekking to the Francés Valley
- Accommodation in Paine Grande Camping

#### Day 4:

- Trekking to Grey sector and back
- Take catamaran from Paine Grande to Pudeto
- Drive back to Puerto Natales
- Return rental car to agency

### BENEFITS OF THE PROGRAM



100% private and independent experience



Vehicle rental in Puerto Natales just for you



Explore the National Park at your own pace



Meals in the privacy of your tent



Minimal social contact

### SAFETY PROMISE

Our Commitment to Cleanliness and Wellbeing

#### Our Safety Promise Protocols

We are committed to cleanliness and the wellbeing of our guests and staff and offer:



Professional trained staff



Reinforced cleaning, disinfection and sanitation protocols



Protocol for the detection and isolation of COVID-19 cases



Use of latest technology



Social distancing and use of face masks



Digital presentation of information

### RATES IN USD

### Camping <sup>(1)</sup>

Rates per person based on 2 people per tent

**\$1,190**

Valid from 1 October 2020 to 26 April 2021

(1) Single supplement: US \$65 per program

### PROGRAM INCLUDES



#### Unforgettable hikes

Las Torres Base Viewpoint, Francés Valley and Grey Glacier Lookout



#### Lodging

3 nights in campsite with fully equipped tent, sleeping bag and sleeping mat



#### All meals

Breakfast and dinner served directly in your tent and box lunch



#### 4 days car rental

Self Drive to/from Puerto Natales and the National Park and from Central sector to Pudeto  
- Requirements: be older than 22 years, valid international driving license



#### Catamaran

Departure from Paine Grande Pier (Lake Pehoe)



#### Ticket

Park entrance fees



#### Welcome Kit

Includes sleeping-bag liner, microfiber towel, water bottle (stainless steel), map and journal notebook - will be given during check in at Central Camping (day 1)

### PROGRAM DOES NOT INCLUDE



Special insurance or guarantees for the car rental



Travel insurance



Fuel for the car



Private Bathrooms



Service tips



Drinks



Any service not specified in the program



# ITINERARY | 4 days, 3 nights

## Day 1: Puerto Natales - Torres del Paine, Trekking to Las Torres Base Viewpoint

Early in the morning you pick up your reserved vehicle at the Rent a Car in Puerto Natales to drive to the Torres del Paine National Park. The trip takes about two and a half hours (112 Kms./70 miles).

After check-in at Central Camping you will hike to the Chileno Mountain Hostel enjoying incredible views of the valley and lakes along the way. Before hiking up the La Morrena, a challenging rocky path, you will pass through a beautiful lenga forest. Once you reach the Las Torres Base Viewpoint you will be rewarded with spectacular views.

After enjoying your box lunch, you will begin to descend towards the Central sector to enjoy dinner and rest for the night.



Departure from  
Pto. Natales  
(2.5 hours approx.)



8-10 hours  
19,5 Kms  
12 miles



Difficulty  
High



Altitude  
Initial: 120 masl.  
Maximum: 870 masl.



Lodging in  
Central sector



## Day 2: Cuernos Sector Hike

You will walk about 22 kms/13.7 miles along the shore of Lake Nordenskjöld and beneath Mount Almirante Nieto and the striking Los Cuernos Mountains.

During the hike you will enjoy magnificent views of the Paine Massif, hanging glaciers, lakes and abundant vegetation and wildlife.

You'll have time during lunch to stroll along the shore and appreciate the lake breeze before heading back via the same route to have dinner and rest for the night.



6 - 8 hours  
22 Kms.  
13.7 miles



Medium  
Difficulty



Altitude  
Initial: 120 masl.  
Maximum: 270 masl.



Lodging in  
Central Sector











### Day 3: Drive to Pudeto - Catamaran Trekking to Francés Valley

After a 45-minute drive in your rental vehicle, you'll take a half hour catamaran trip across the sparkling blue Lake Pehoé to Paine Grande. When you arrive you'll follow a relatively flat trail for 7 km / 4 mi along the north side of Lake Skottsberg. When you reach the entrance to the Francés Valley, you'll head up a steep trail to explore the valley further.

As you stroll through the native Lenga tree forest you will feel its energy and past the treeline, a new landscape awaits - an awesome view of the multi-colored Los Cuernos Mountains and the Francés Glacier that hangs from Mount Paine Grande. This active glacier gives you the opportunity to hear and see its movements, with frequent cracks and calvings. Before leaving, don't forget to look behind you! The lakes below, surrounded by mountains, seal the deal on this panoramic view.

You will have dinner and spend the night in Paine Grande sector.

					
Central Sector to Pudeto (45 minutes)	Catamaran Lake Pehoé	7-9 hours 20 Kms. 12.4 miles	Difficulty High	Altitude Initial: 120 masl. Maximum: 800 masl.	Lodging in Paine Grande sector

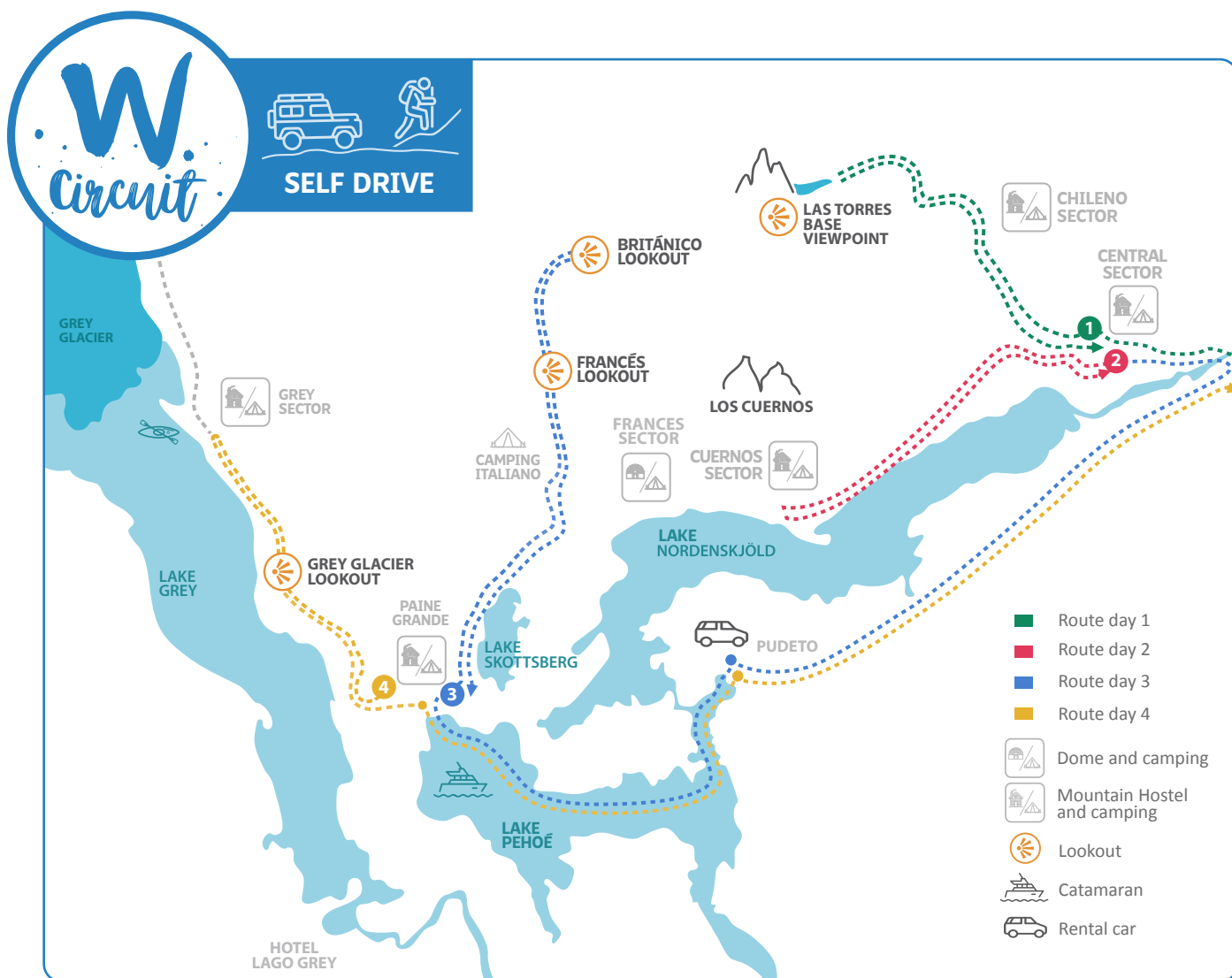


### Day 4: Trekking to Grey Sector, Lake Pehoé Navigation and return to Puerto Natales

Today you will hike the third leg of the W Circuit, an adventure that offers unforgettable views of the Park and the wonderful Grey Glacier. The hike begins bordering the Mount Paine Grande, the highest peak of the Massif (3,050 mts./ 10,000 ft), with incredible views towards its hanging glaciers. Walking between Ñirres, Coigües and Notros, you will arrive at the first Lake Grey viewpoint from where you will see numerous floating icebergs. You will continue walking with the imposing view of the Grey Glacier ahead until you reach the Grey Mountain Hostel.

After lunch you will return to the Paine Grande sector from where you will take the catamaran to Pudeto at 6:30pm. There you will take your rental car and drive back to Puerto Natales to return the vehicle.

		
8 - 10 hours 22 Kms. 13.7 miles	Difficulty High	Altitude Initial: 43 masl Maximum: 313 masl.
		
Catamaran Lake Pehoé	Return to Puerto Natales	



- **Day 1:** Puerto Natales - Torres del Paine, Trekking to Las Torres Base Lookout
- **Day 2:** Trekking to Cuernos sector round trip
- **Day 3:** Drive to Pudeto - Catamaran, Trekking to Francés Valley
- **Day 4:** Trekking to Grey sector, Lake Pehoe Navigation and return to Puerto Natales



Remember, for every night you stay in one of our accommodations, US \$2 is donated to our NGO AMA Torres del Paine. This way we all contribute to the conservation of the natural and cultural beauty of the Park and Las Torres Reserve.

**Contact Details:** Phone/WhatsApp: +56 9 61215021 / [info@lastorres.com](mailto:info@lastorres.com) / [www.lastorres.com](http://www.lastorres.com)